



<b>(A) Installations</b>	<b>4</b>
<b>Portal del Eter Rojo</b>	<b>5</b>
Faena Tulum	
<b>Mirror Gate</b>	<b>8</b>
Cairo Egypt	
<b>Doors of Perception</b>	<b>11</b>
Mexico City	
<b>Hall of Visions</b>	<b>14</b>
Miami Art Week	
<b>Future Transmutation</b>	<b>17</b>
Miami Art Week	
<b>(B) Artworks &amp; Commissions</b>	<b>20</b>
<b>Sculptures</b>	<b>21</b>
Temple of Variations	
Portal of Variations	
Interrealm Portal	
Dorway to Possibilities	
Egg of Reflection	
Egg of Pearl	
Vayu Tattwa	

Apas Tattwa		(C) Biography	76
Duality Chess		(D) Press	78
Marble Duality Chess		(E) Awards & Recognitions	80
<b>Textiles</b>	<b>43</b>	(F) Exhibitions	82
Tattwa Scrying Temple			
Duality Tapestry			
Pythagorean Matrix Altar			
<b>Paitings</b>	<b>49</b>		
La Máquina Alfa			
Strange Sphere Floating in 5D			
Amber Transfiguration			
Orange Flame			
Violet Orb			
Transmutation Revealed			
Field of Visions			
The Garden of Duality			
<b>Furniture</b>	<b>67</b>		
Cama Hongo			
Portal Desk			
Marble Wavy Desk			
Onyx Energy Desk			

## (A) Installations

# PORTAL DEL ETER ROJO

## Faena Tulum



Portal del Eter Rojo  
Faena Tulum  
Permanent Installation  
Tulum, 2025

W 300 cm x L 300 cm x H 180-200 cm  
Stainless Steel, Marble, Chukun

Tulum, 2025



A permanent installation at Faena Tulum, Portal del Éter Rojo is inspired by ancient Tattwa symbols, focusing on the element of ether (akasha), represented by a red egg. The egg symbolizes akasha—the cosmic essence of space and spirit—while the color red evokes fire, a dynamic force of creation and manifestation. Serving as a centerpiece for contemplation, the egg invites meditation, activating the subconscious and enhancing the connection with one's creativity and higher self.

Resting on a circular platform with ascending steps, the installation evokes spiritual ascension. At the base of the egg, a marble inlay design integrates the four classical elements: fire as a triangle, air as a circle, water as a crescent moon, and earth as a square. Black marble symbolizes grounding and stability, while white onyx represents creativity, mental clarity, and spiritual vision.

The use of onyx reinforces the installation's connection to imagination and inner growth, encouraging visitors to engage in a personal process of transformation. By stepping onto the platform and contemplating the central egg, participants become part of an immersive ritual of elevation, physically ascending while spiritually reflecting.

As with Zeta's previous works, Portal del Éter Rojo is an experience rather than a passive observation. Blurring the lines between sculpture and architecture, it offers a portal where energy, matter, and spirit converge, inviting participants to explore transformation and envision future possibilities.



MIRROR GATE  
Forever Is Now III  
Art D'Egypte



Mirror Gate  
Forever Is Now III, Art D' Egypte  
Cairo Egypt, 2023

W 180-360 cm x L 864 cm x H 530 cm  
Limestone, Stainless Steel, Car Paint, Marble, Fiberglass

Cairo Egypt, 2023





Mirror Gate is an immersive artwork installation created specifically for Forever is Now 2023, drawing inspiration from the rich cultural history of ancient Egypt. A limestone portal, crafted from the same stone as the pyramids and juxtaposed with gold and blue car-painted spheres, reflects the convergence of natural and synthetic materials in our post-industrial era, alongside the geological crust of our planet. The iridescent blue embodies the sacred beetle, symbolizing rebirth and regeneration, while the gold spheres represent the sun, a symbol of ancient Egypt's wealth and prosperity, evoking the enduring legacy of this great civilization. A pyramid crowns the portal, establishing a powerful visual connection to the pyramids of Giza.

As visitors traverse the checkerboard pathway, reminiscent of ancient Egyptian games like Senet, they encounter a mirror egg sculpture that invites self-reflection and symbolizes birth, growth, and creation. In Egyptian mythology, Thoth, depicted as an ibis, is self-created and lays the cosmic egg that holds the essence of all creation.

By reflecting visitors and connecting them with the ancient symbols of the pyramids, Mirror Gate offers a site-specific and interactive experience that inspires contemplation and encourages exploration of the depths of the subconscious mind.



# DOORS OF PERCEPTION

## Zona Maco



Doors of Perception  
Zona Maco  
Mexico City, 2023

W 501 cm x D 852.5 cm x H 270 cm  
Marble, Stainless Steel, Brass

Mexico City, 2023



Philia Gallery is pleased to announce Pilar Zeta's large-scale installation in Mexico, "Doors of Perception," during MACO art week 2023.

The metaphor of Doors of Perception was first used by William Blake in his poem The Marriage of Heaven and Hell to represent his feelings about mankind's limited perception of reality: "If the doors of perception were cleansed everything would appear to man as it is, Infinite." Aldous Huxley's philosophical essay takes its title from that verse in Blake's poem. In Huxley's work, he writes about entering "more elevated" levels of consciousness in order to explore our perception.

Based on the idea that our unconscious is managed by symbols, Pilar Zeta creates an installation where portals work as doors that facilitate the entrance to other levels of perception and transform our energy as we pass through them. Doors of Perception thus acts as a door to connect with our higher self and as a gateway to infinity and new realities.

The artwork calls the viewers to explore beyond their conscious and physical world. Several human-scale chess pieces are placed inside the installation, arranged in different shapes, each one symbolizing a philosophy or a human archetype, as well as the way we playfully walk through life.

At the end of the corridor, we find ourselves in front of an altar holding a sculptural white egg over a golden sphere. While the sphere represents fluid, flowing entities that adapt to the environment, the egg sculpture refers to a moment of creation, rebirth, and realization, connecting us with our purest form.

In the center of the installation, a path made of tiles floats above the floor in a black-and-white checkerboard arrangement, an allegory of the dualities of the self—the Yin and Yang. As we step up onto this platform—as the artist intends for visitors to do—we become surrounded by an ethereal realm, connecting with the sacred, the unknown, and the magic.



HALL OF VISIONS  
Faena Art  
Miami Art Week



Hall of Visions  
Faena Art, Miami Art Week  
Miami, 2023

W 7m x L 20m x H 6m  
Fiberglass, Car Paint, Stainless Steel

Miami, 2021



The idea behind Hall of Visions comes from a search for the ability to be present in order to manifest a future self. In this way, the work serves as both a metaphor and a physical space, inviting the viewer to explore the built environment—one must literally walk through a corridor to arrive at a large reflective egg. This primal and beautiful symbol of creation invites those looking into it to see themselves in the present. Hall of Visions thus acts as a corridor of alignment, guiding participants to perceive their potential and connect with their vision.

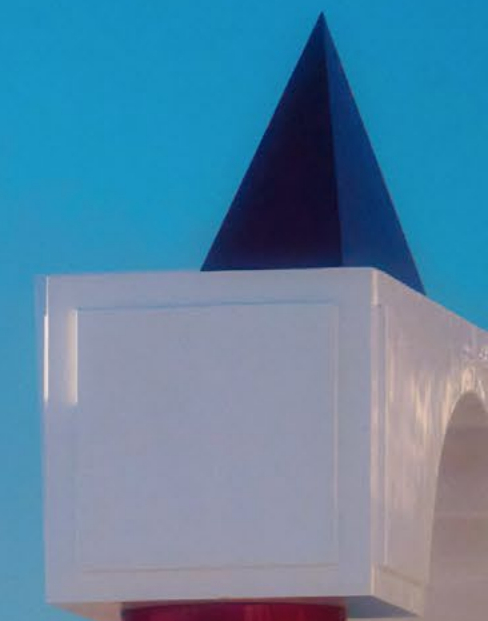
“We have only to raise Imagination to the state of Vision and the thing is done.”  
– William Blake

Much like the artwork created as part of the Madi movement, the architectural elements of Zeta’s work do not impose propaganda or an ideological agenda. Instead, they create a point of reflection that emerges from a mathematical approach, leading to a rationality of aesthetics.

Zeta explores colors and shapes through a constructive lens—as visitors walk through the installation, sharp fuchsias, purples, and blues guide the way to the mirrored sculptural egg. Its reflection places each person, each self, within the surrounding environment, prompting a pause in the present moment. Beyond the egg, the horizon aligns the artwork with the natural elements around it, emphasizing the cycles of day and night. As time is in constant flux, we are reminded that the future is now.

The installation serves as a portal for the self, an immersive artwork that spills out of the traditional frame. Its surreal placement on the beach moves away from realism while acknowledging the existence of solid objects that celebrate pure geometric form. Our perception of the outdoors has shifted over the past two years, and placing a portal with such sharp shapes and colors in contrast with the ocean forces us to rethink our relationship with place and question where we truly stand.

Whereas the Madi movement emerged in a post-war reality, Zeta’s work exists on the brink of a post-pandemic reality. Her portal calls on us to align with our visions. To see yourself truly, you must go within, for the only way out is through.





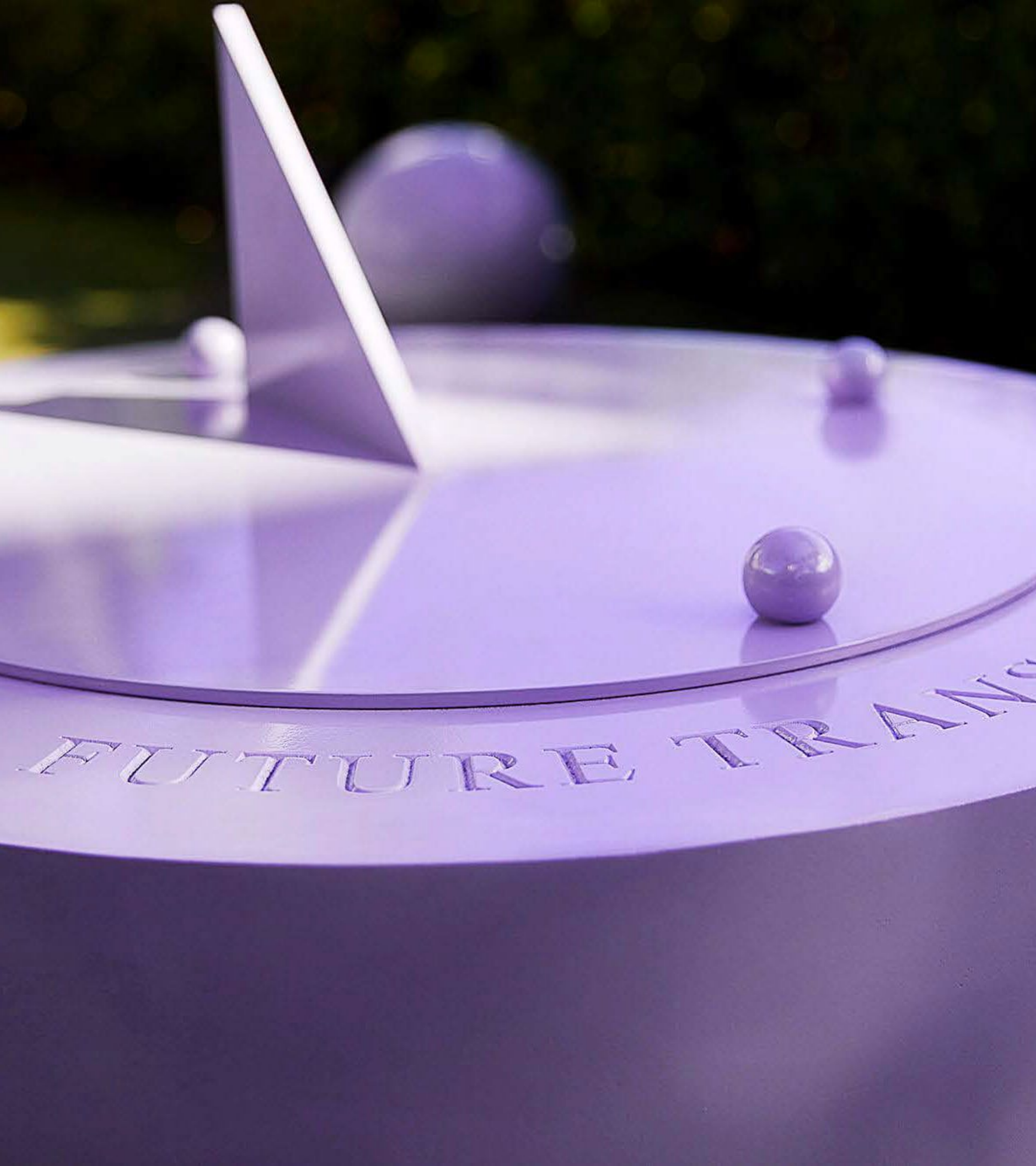
FUTURE TRANSMUTATION  
W Hotels  
Miami Art Week



Future Transmutations  
W Hotels, Miami Art Week  
Miami, 2023

W 180-240 cm x L 764 cm x H 550 cm  
Wood, Car Paint





In Future Transmutation, the artist engages with mathematics, astronomy, and occult philosophies as creative devices. We must come to terms with the fact that reality is a transforming reality. We, like all living entities—at various speeds and in various ways—are constantly changing. To keep up with the process of transmutation and metamorphosis, we need imagination, which Pilar Zeta skillfully triggers through symbolic meaning.

Completely glazed in a violet hue, a color that evokes the transmutation of energy and is known to elevate our consciousness to a higher state, Zeta presents a series of elements loosely based on traditional Masonic altarpieces. At the center, 44 tiles float above the garden floor in a checkerboard arrangement, an allegory of the dualities of the self. As visitors step onto this platform—as the artist intends—they become immersed in glowing, iridescent light and interacting shapes, while the tiles respond dynamically to movement and touch.

Guarded by two candles, the installation draws attention to the representation of a portal. Portals are spaces that harbor a limit, where two things meet: one begins, and the other ends. Perhaps they are privileged places for mysterious, magical events to occur, opening new dimensions and offering opportunities for transformation.

Several free-standing sculptures encircle the installation, arranged in triangular formations. The tension in our alchemical state of matter is expressed through two geometric bodies derived from Pythagoras' mathematical theorem: a sphere, representing fluid, adaptable entities that flow with the environment, and a pyramid, symbolizing fire—energetic, forceful, and dynamic forces in the world. Finally, a sundial connects the installation to the sun, signaling its movement and position. While everything within the installation invites us to move toward future transmutation, the sundial reminds us of the present moment, emphasizing that our future self is shaped through the transformations happening now. It invites us to imagine a future with all of our senses and explore what it might look like.

Ultimately, Zeta's installations cannot be circumvented but must be walked through. Her works expand beyond the traditional limits of sculpture but do not quite reach the minimal conditions of architecture. This almost frustrated ambiguity adds a playful, scenographic, and performative aspect to her work, showcasing the artist's masterful manipulation of space and leading spectators toward new aesthetic experiences.

## **(B) Artworks and Comissions**

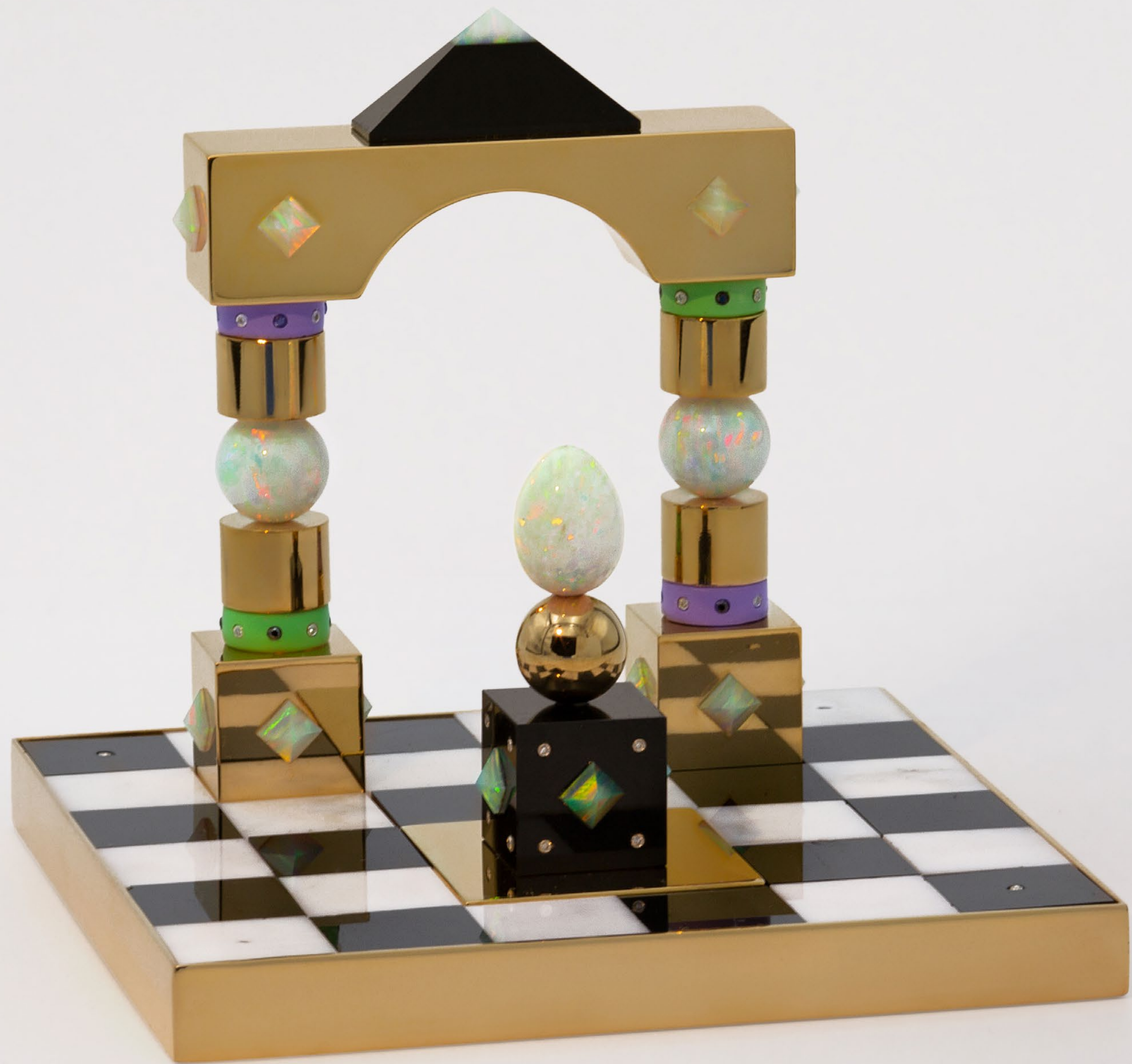
# SCULPTURE

## Temple of Variations



Temple Of Variations  
W 7.62 cm x H 7.62 cm  
Edition: 1/1 + 1 AP  
18KT Gold Plated Brass, Gold, White Agate, Black Jade, Black & White Diamonds, Opal

Temple Of Variations is a talisman crafted with precious stones, each chosen for its symbolic significance: gold for abundance, diamonds for strength, agate for balance, jade for protection, and opal for transformation. This miniature artwork embodies a meeting point between artist and viewer, inviting interaction through its portable egg element. Blending the fragility of its size with the power of its materials, it channels the artist's fascination with minerals and their magical qualities, offering a timeless object of introspection and connection..



# SCULPTURES

## Portal of Variations



Portal Of Variations  
W 44 x H 49 x D 11 cm / Pedestal: W 66 x H 88 x D 33 cm  
Edition: 3/3 + 1 AP  
Stainless Steel, Car Paint, Resin on Marble Checkerboard Pedestal

Portal of Variations expands the jewel-like Temple of Variations into a medium-scale sculptural form, bridging the personal and the spatial. The marble checkerboard pedestal amplifies its symbolic resonance, while the larger format invites deeper engagement with its transformative energy, maintaining a strong link to the original talisman's essence.





# SCULPTURES

## Interrealm Portal



Interrealm Portal  
Portal: W 40 cm / Pedestal: White Marble, Black Marble on Aluminum Base  
Edition: 1/5 + 1 AP  
Aluminum, Metallic Car Paint, Black Marble



# SCULPTURES

## Doorway to Possibilities



Doorway To Possibilities

Portal: W 40 cm

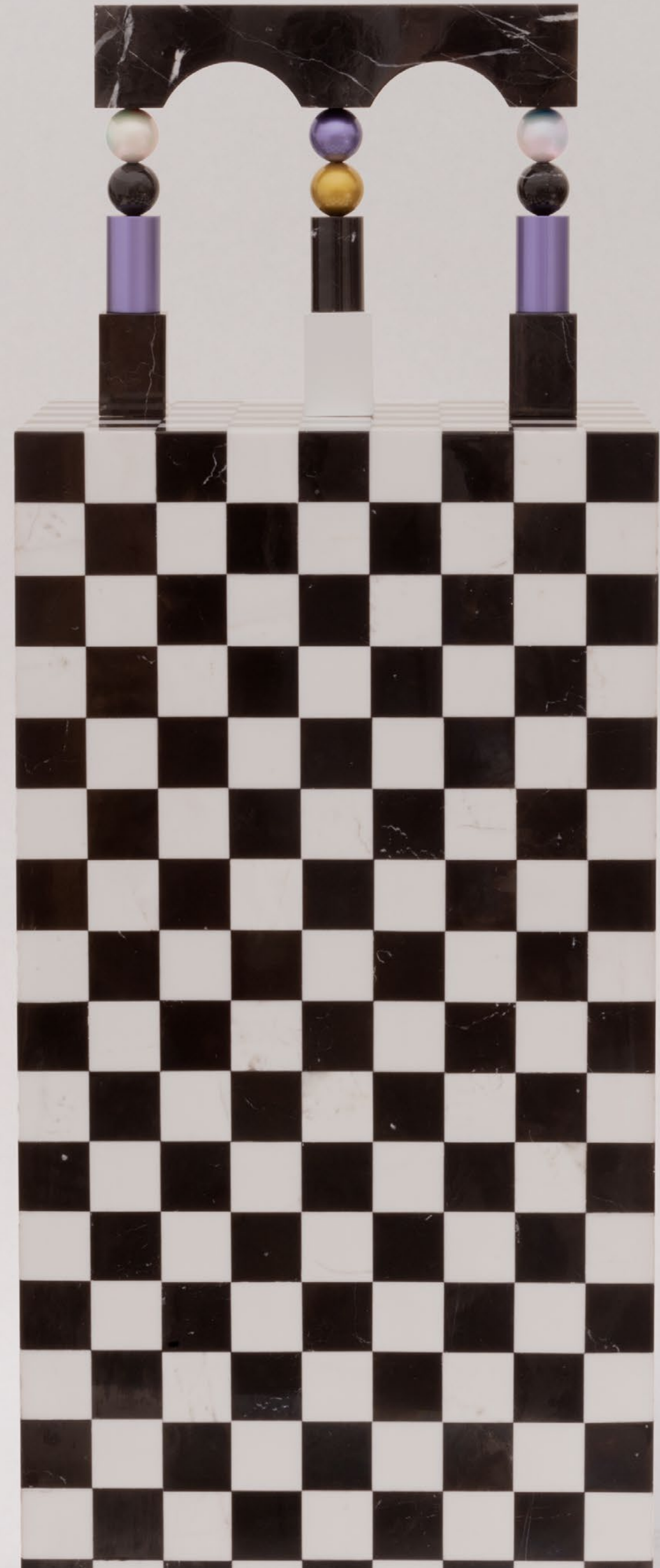
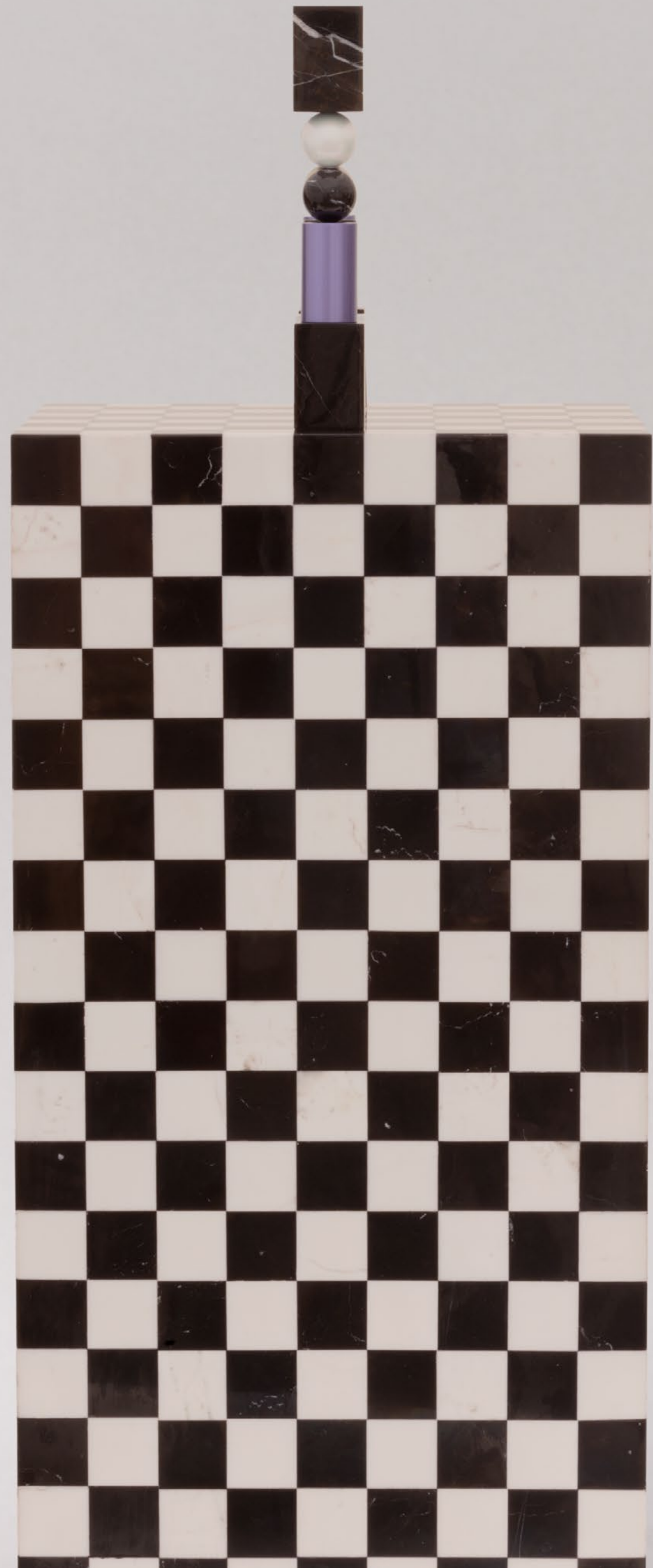
Pedestal: White Marble, Black Marble on Aluminum Base

Edition: 1/5 + 1 AP

Aluminum, Metallic Car Paint, Black Marble

Doorway To Possibilities is a three-dimensional sculpture resting on a checkerboard pedestal, symbolizing the dualities of the self. The recurring use of the arch in Zeta's work evokes a perpetual state of transition and transformation. This polarity is further reflected in the contrast between materials: millenary marble, formed from the earth's geological crust, juxtaposed with the synthetic sheen of pearl and golden car paint. Together, these elements bridge the natural and the artificial, creating a dynamic interplay of textures and meaning.

Los Angeles, 2022



# SCULPTURES

## Egg of Reflection



Egg Of Reflection  
W 70 x H 30 x D 30 cm  
Edition: Made to Order (Custom Colors, Stones, and Sizes)  
Black Marble, Stainless Steel

Egg Of Reflection explores the cyclical nature of life and the interconnectedness of all things. The black marble cube, adorned with delicate fossils, adds a layer of geological history, grounding the piece in the ancient natural world. The reflective stainless steel egg invites viewers to gaze into its surface and contemplate the infinite possibilities within the quantum field, where everything in the universe is connected. This sculpture, the result of months of experimentation and exploration, can be customized with a selection of colors and stones, blending materials, history, and boundless potential into a meditative and thought-provoking work of art.



# SCULPTURES

## Egg of Pearl

Los Angeles, 2022



Egg Of Pearl  
W 99 cm  
Edition: Made to Order  
Marble, Aluminum, Iridescent Car Paint

Egg Of Pearl embodies the metaphysical qualities of transformation and reflection. The iridescent pearl finish shimmers with shifting hues, symbolizing the ever-changing nature of perception and consciousness. Crafted from marble and aluminum, this sculpture combines the grounding permanence of natural stone with the futuristic sheen of iridescent car paint. The egg, a timeless symbol of creation and potential, invites viewers to meditate on the intersection of the physical and the metaphysical, offering a gateway to infinite possibilities and inner exploration.





# SCULPTURES

## Vayu Tattwa



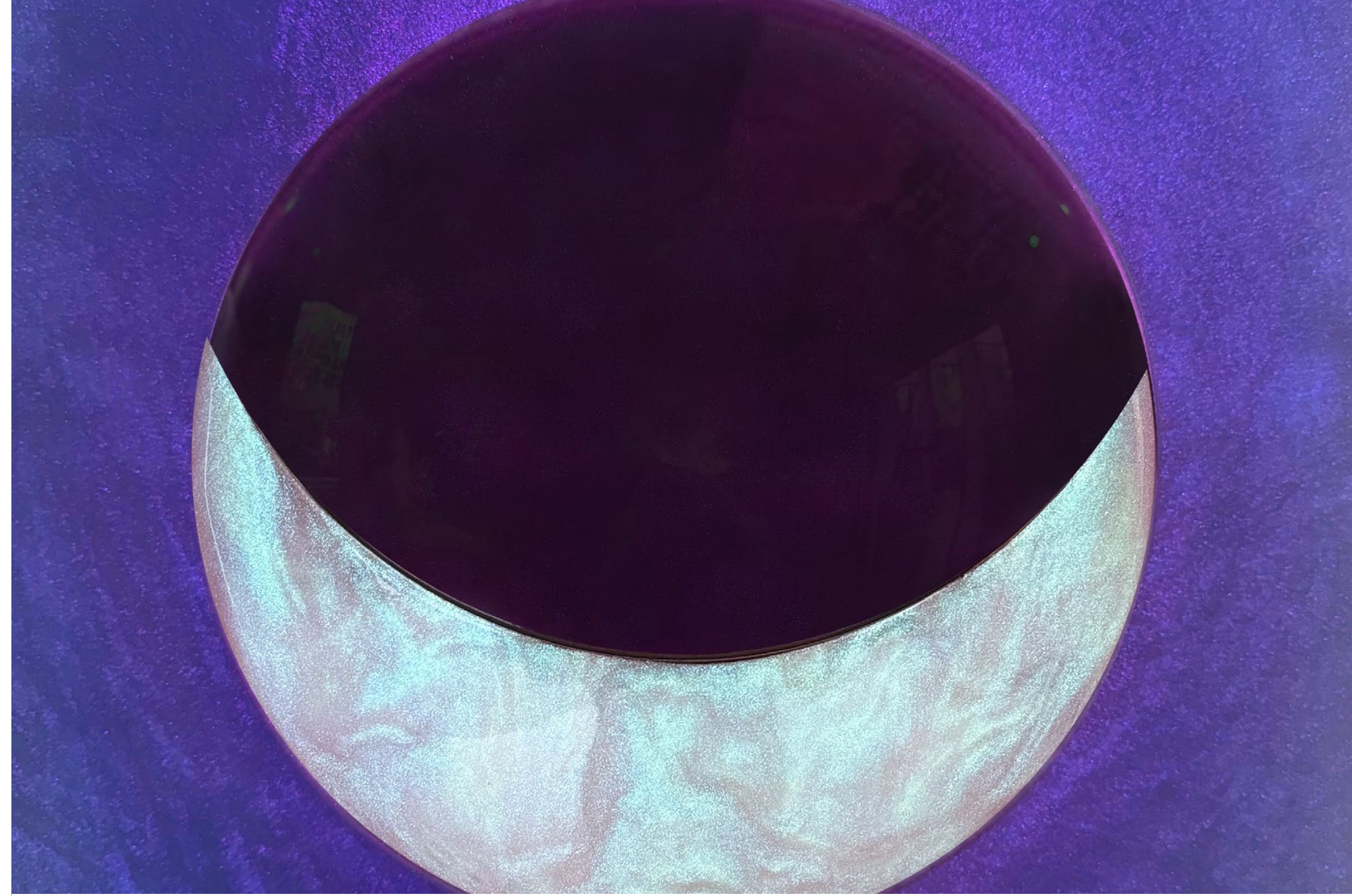
Vayu Tattwa  
W 120 x H 55 cm  
Edition: 1/5  
Resin, Metal

Vayu is one of the five Tattwas, representing the element of Air in ancient Indian philosophy. The term "Tattwas," derived from Sanskrit, signifies reality and dates back to as early as 2000 BC, predating the Greek understanding of natural elements. These five elements symbolize the essence of nature and human experience. Meditating on their symbols is believed to enhance focus, visualization, and communication, aiding in the manifestation of goals and desires. In Vayu, the element of Air is represented by a blue circle, embodying clarity of thought, concentration, and the power of communication. The interplay of resin and metal captures the ethereal and fluid qualities of air, bridging ancient philosophy with modern artistic expression.



# SCULPTURES

## Apas Tattwa



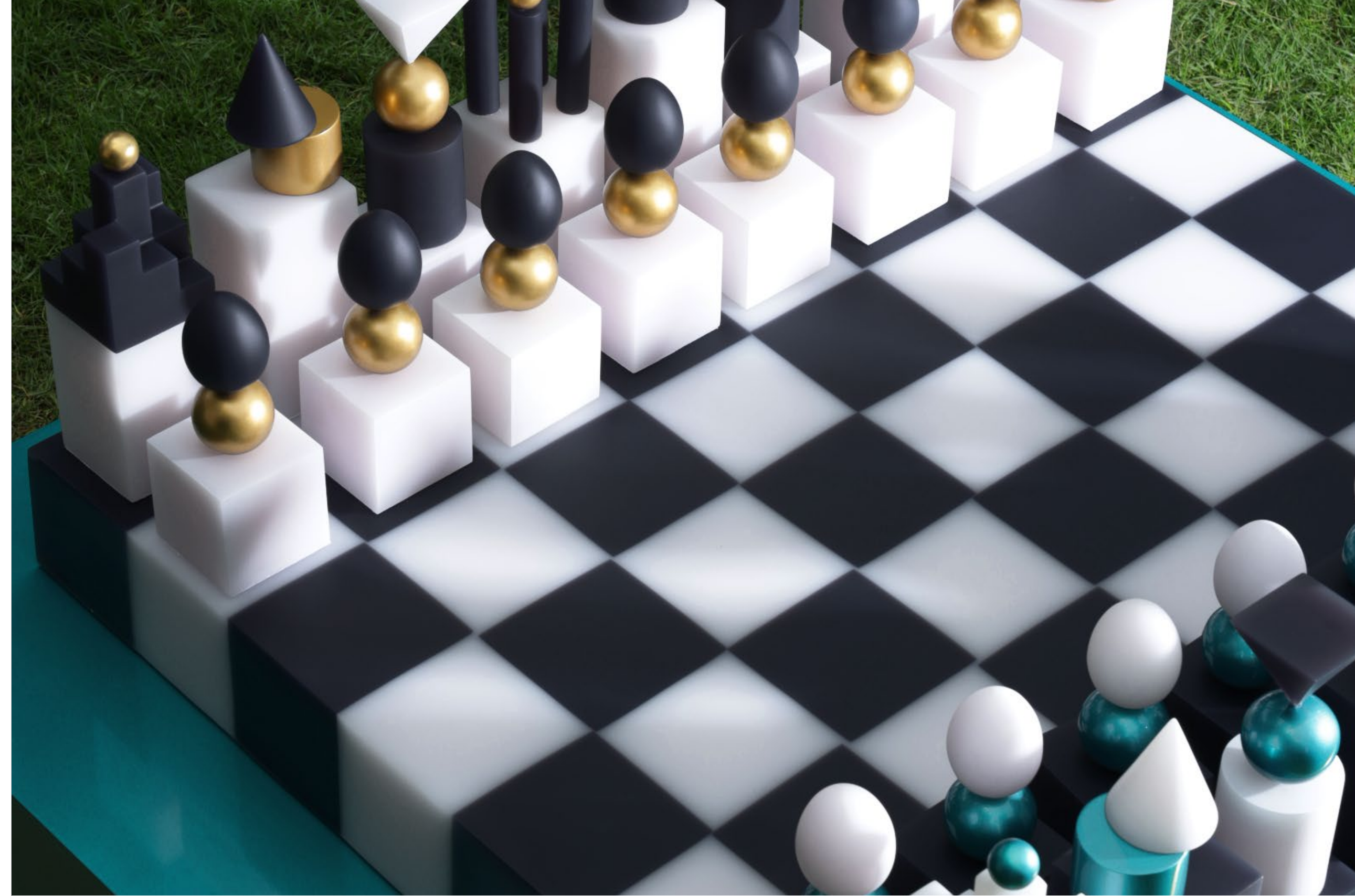
Apas Tattwa  
W 120 x H 55 cm  
Edition: 1/5  
Resin, Metal

Apas is one of the five Tattwas, representing the element of Water in ancient Indian philosophy. The term "Tattwas," derived from Sanskrit, signifies reality and dates back to as early as 2000 BC, predating the Greek understanding of natural elements. These five elements symbolize the essence of nature and human experience. Meditating on their symbols is believed to enhance focus, visualization, and communication, aiding in the manifestation of goals and desires. In Apas, the element of Water is represented by a silver crescent, symbolizing intuition, adaptability, and the flow of emotions. The interplay of resin and metal captures the fluid, reflective qualities of water, bridging ancient philosophy with modern artistic expression.



# SCULPTURES

## Duality Chess



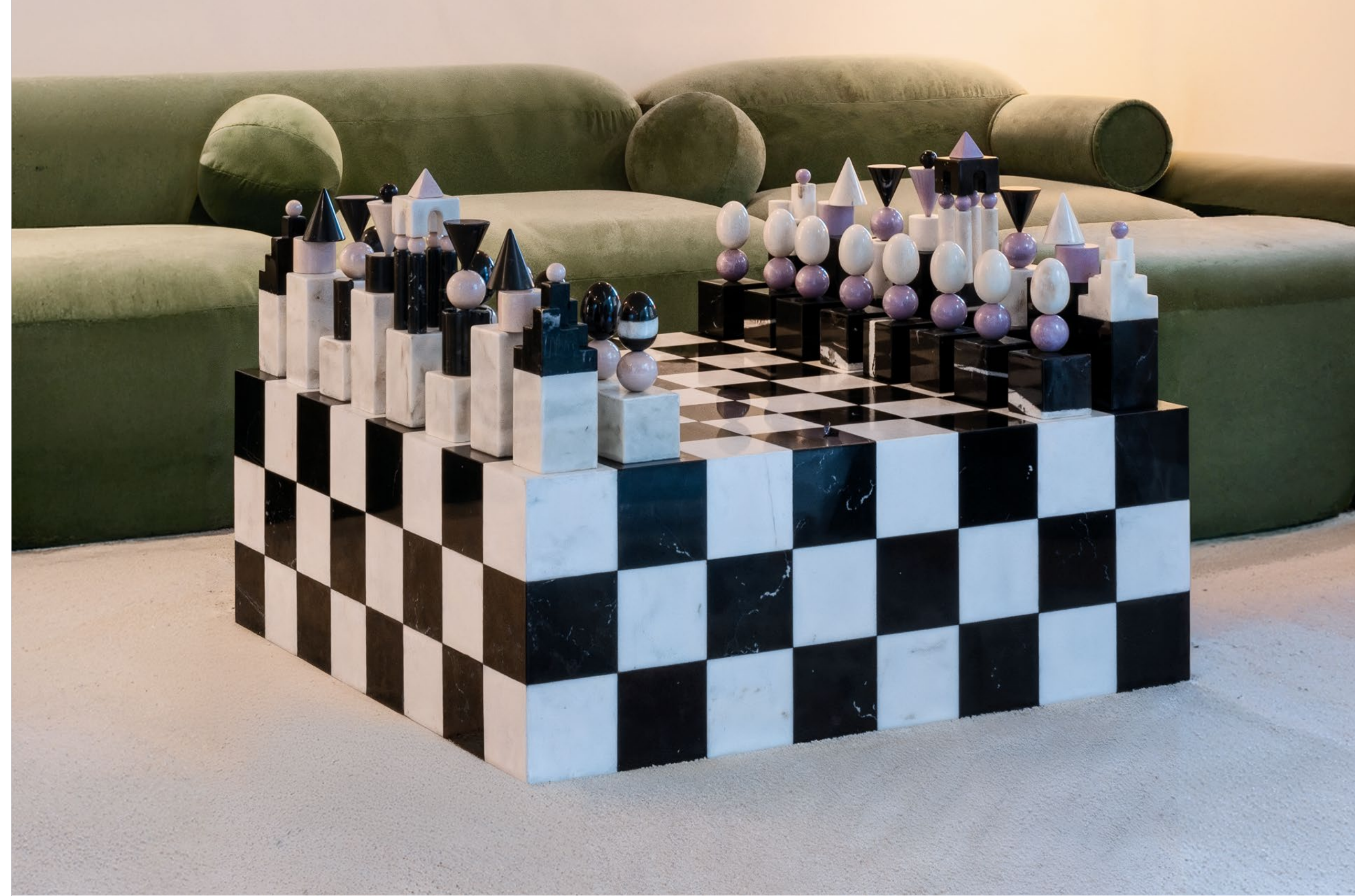
Duality Chess  
W 168 x H 168 x D 44 cm  
Edition: 1/1 + 1 AP  
Resin, Stainless Steel, Auto Paint

Duality Chess delves into the multifaceted nature of human existence, with each symbolic piece reflecting an essential aspect of the self. Kings serve as portals, bridging realms of light and darkness; queens represent the mind; bishops embody emotions; knights symbolize vitality; and castles depict the physical body. The pawns, shaped as eggs, represent the dynamic force of creation within the duality of the game, encouraging contemplation of life's balance between opposing forces. The interplay of resin, stainless steel, and auto paint underscores the contrast between the tangible and the symbolic, inviting viewers to explore the deeper meanings embedded in the chessboard's dualistic narrative.



# SCULPTURES

## Duality Chess



Duality Chess  
W 168 x H 168 x D 44 cm  
Edition: 1/1 + 1 AP  
Resin, Stainless Steel, Auto Paint

Duality Chess delves into the multifaceted nature of human existence, with each symbolic piece reflecting an essential aspect of the self. Kings serve as portals, bridging realms of light and darkness; queens represent the mind; bishops embody emotions; knights symbolize vitality; and castles depict the physical body. The pawns, shaped as eggs, represent the dynamic force of creation within the duality of the game, encouraging contemplation of life's balance between opposing forces. The interplay of resin, stainless steel, and auto paint underscores the contrast between the tangible and the symbolic, inviting viewers to explore the deeper meanings embedded in the chessboard's dualistic narrative.





# TEXTILES

## Tattwa Scrying Temple



Tattwa Scrying Temple  
W 200 x H 110 cm  
Edition: 1/1  
Handmade Wool, Gobelin-Style Tapestry

The Tattwa Scrying Temple was created over six months using a traditional gobelin-style tapestry technique rooted in 15th-century Paris. This handmade piece transforms a digital render into a tangible form, bridging the virtual and physical worlds. Inspired by the five elemental symbols of tattwas from Eastern philosophy, the tapestry serves as both a meditation tool and a daily reminder of the creative journey. Each tattwa embodies unique properties, offering a gateway to universal energies and the transition from imagination to handmade artistry.



# TEXTILES

## Duality Tapestry



Duality Tapestry  
Edition: 1/1 + AP  
Size: 300 x 200 cm  
Materials: Handmade Egyptian Knot-Style  
Exhibited: Dubai Art Week, 2023

Duality Tapestry draws inspiration from the symbolic chess pieces in Duality Chess, exploring the multifaceted nature of human existence. Each piece on the tapestry reflects an essential aspect of the self: kings act as portals, bridging realms of light and darkness; queens symbolize the mind; bishops embody emotions; knights represent vitality; castles depict the physical body; and pawns, shaped as eggs, evoke the dynamic force of creation. Crafted using the traditional Egyptian knot technique, the tapestry captures the interplay of dualities and the balance between opposing forces. This meticulous handmade process enhances the piece's rich texture and depth, transforming the timeless symbolism of chess into a striking, large-scale work of art.

Dubai, 2023



TEXTILES  
Pythagorean Matrix Altar



Pythagorean Matrix Altar  
W 140 x H 240 cm  
Edition: 5 + 1 AP  
Wool Tapestry

Pythagorean Matrix Altar is a wool tapestry inspired by Pythagorean principles, exploring the harmony between geometry, philosophy, and spirituality. Its intricate patterns evoke the mathematical foundations of reality. This piece holds personal significance for the artist, as the black cat depicted in the tapestry became real two years ago as Matrix, the artist's cat. The work celebrates the interplay between creative vision and manifestation, merging universal structures with personal connection.



# PAINTINGS

## La Máquina Alfa



La Máquina Alpha  
W 130 x H 250 cm  
Edition: 1/1  
Oil on canvas in aluminum frame

La Máquina Alpha is a mysterious device designed to induce the brain into the alpha state. Inspired by the Silva Method from the 1970s, it draws on alpha waves (8-12 Hz), enhancing creativity and improving information absorption. First created digitally, the piece was painted in oil by an artisan while listening to alpha sound frequencies. Acting as a meditative tool and portal to this frequency, it blends mystery, science, and imagination into a compelling work of art.





PAINTINGS  
Three Dream Gates



Three Dream Gates  
W 65 x H 65 cm  
Edition: 1/1  
Oil on canvas in wood frame

These three paintings are portals, created for my guest bedroom—a space for meditation, sleep, and expanded perception. Each piece aligns with the energy of the room, acting as a passageway into lucid dreams. Through celestial geometry and intuitive symbolism, they form a bridge between dimensions, little doorways to a higher realm. More than static images, they hold a vibrational presence, anchoring unseen frequencies into the space.



PAINTINGS  
Sympathetic Resonance



Sympathetic Resonance  
W 175 x H 175 cm  
Edition: 1/1  
Oil on canvas in wood frame

This piece is a portal for creating sympathetic resonance, a vibrational field that tunes into the energy of the space. Like a frequency device, it amplifies connection, harmony, and deep introspection. Through geometric forms and intuitive composition, it becomes a bridge between the seen and unseen, a catalyst for attunement and expanded awareness. More than an object, it carries a presence—one that vibrates with the subtle currents of consciousness.



**PAINTINGS**  
**Strange Sphere Floating in 5D**



Strange Sphere Floating In The 5d  
W 150 x H 84 cm  
Edition: 1/1  
Oil on canvas in aluminum frame

This captivating piece invites viewers into a surreal dimension where metaphysical and geometric elements merge. Pink pyramids rise from a tranquil reflective surface, framing a central portal-like structure that pulses with energy. A sphere, suspended in perfect balance, embodies the enigma of multidimensional reality. Gradient hues and soft clouds evoke a dreamlike quality, guiding viewers on a contemplative journey through space and symmetry.



# PAINTINGS

## Amber Transfiguration



Amber Transfiguration  
W 56 x H 100 cm  
Edition: Unique  
Oil on canvas in aluminum frame

Amber Transfiguration serves as a sacred altar, embodying the transformative power of creation and reflection. Warm amber tones radiate alchemical energy, symbolizing renewal and spiritual elevation. The composition bridges the realms of the physical and metaphysical, offering a contemplative portal to higher dimensions. Its aluminum frame grounds the timeless spiritual essence in a modern aesthetic.





PAINTINGS  
Orange Flame



Orange Flame  
W 100 x H 100 cm  
Edition: Unique  
Oil on canvas in aluminum frame

Orange Flame captures vitality and transformation through vivid hues. Fiery orange tones symbolize the spark of creation, passion, and renewal, drawing viewers into its magnetic intensity. This artwork serves as a spiritual beacon, inviting contemplation of destruction and rebirth.



PAINTINGS  
Violet Orb  
Transmutation Revealed



Violet Orb & Transmutation Revealed  
W 140 x H 140 cm  
Edition: Unique Pair of Artworks  
Oil on Canvas

Currently on view at Moco Museum London, this pair of oil paintings explores temples as portals. Violet Orb and Transmutation Revealed symbolize spiritual transmutation and the alchemy of consciousness. Oil paint, revered as a conduit for energy, strengthens the connection between the physical and metaphysical. Together, these works invite reflection on the harmony between material and spiritual realms.

London, 2024

59



# PAINTINGS

## Field of Visions

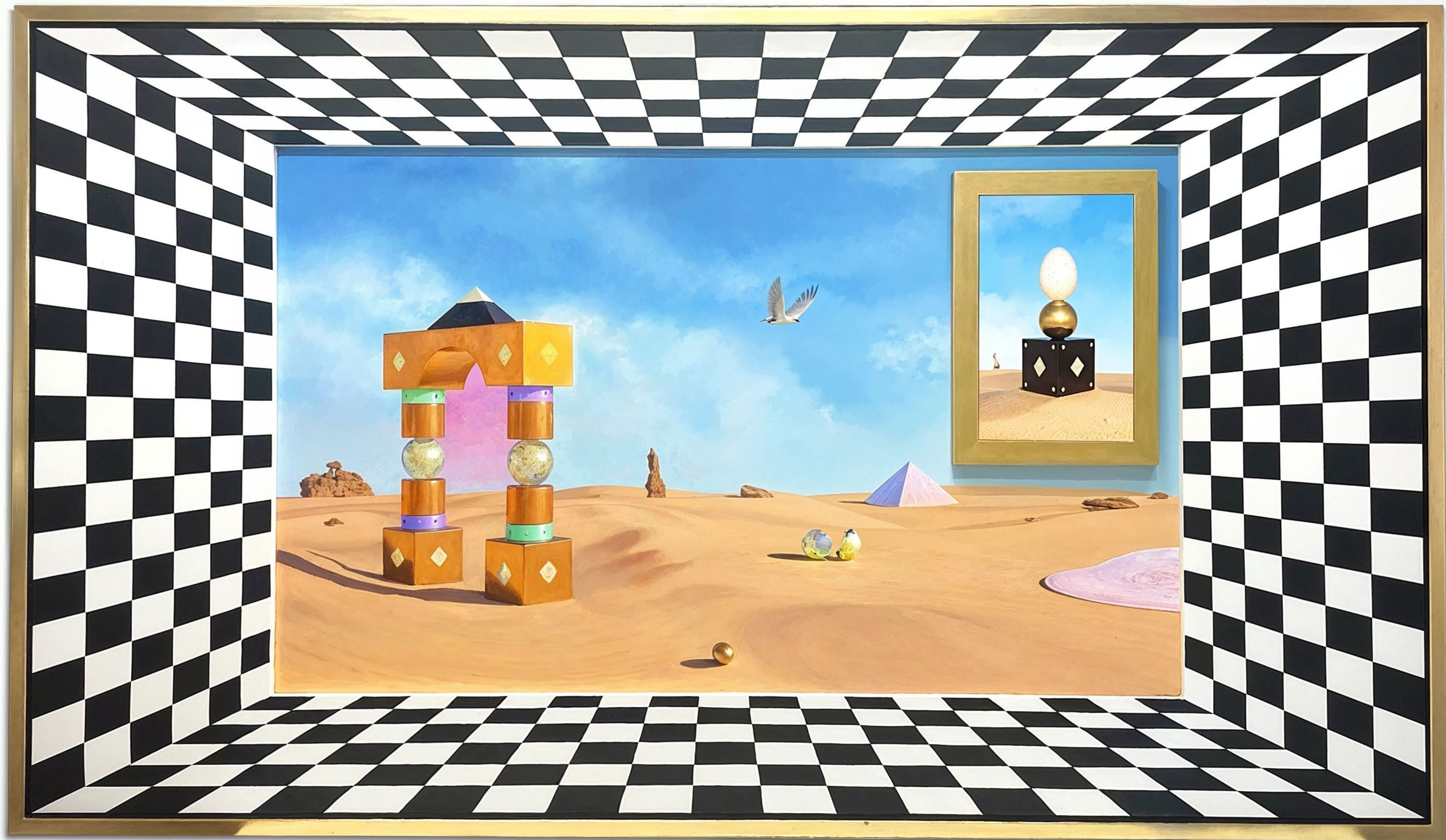


Field Of Visions  
W 97 x H 58 cm  
Edition: 1/1  
Oil painting on canvas, Wood Frame, LED Screen + NFT

Field of Visions presents a desert landscape where stillness is barely sustained by brittle objects in a mysterious haze. The checkerboard passepartout symbolizes cosmic dualism: light and dark, order and chaos. By integrating a screen with an animated NFT egg, the piece transcends classical painting, inviting viewers into a fictional world of endless variations and possibilities.

Los Angeles, 2022

61



# PAINTINGS

## The Garden of Duality



The Garden of Duality  
W 200 x H 120 cm  
Edition: Unique  
Oil on canvas in aluminum frame

The Garden of Duality reimagines chess pieces as symbols of human existence. Kings act as portals, queens represent the mind, bishops embody emotions, knights symbolize vitality, castles depict the body, and pawns evoke creation. This painting explores the balance between light and shadow, creation and stillness. Its aluminum frame bridges timeless and contemporary design, offering a meditation on duality.





PAINTINGS  
The Garden of Duality



The Garden Of Duality  
W 200 x H 120 cm  
Edition: Unique  
Oil on canvas in aluminum frame

The Garden of Duality reimagines chess pieces as symbols of human existence. Kings act as portals, queens represent the mind, bishops embody emotions, knights symbolize vitality, castles depict the body, and pawns evoke creation. This painting explores the balance between light and shadow, creation and stillness. Its aluminum frame bridges timeless and contemporary design, offering a meditation on duality.



# FURNITURE

## Cama Hongo



Cama Hongo  
King Size (200 x 200 cm)  
Edition: Unique  
Materials: Velvet, Wood

This king-sized bed is designed as a vessel to the astral plane, inspired by the liminal space between wakefulness and dreaming. Its organic, mushroom-like shapes and soft, skin-toned palette evoke tranquility and enhance the subconscious, fostering lucid, vivid dreams. Drawing from feng shui principles, the design creates a cocoon-like atmosphere, bridging the dream and waking worlds while promoting peace and creativity.



# FURNITURE

## Cama Hongo



Espejo Hongo  
200 cm x 140 cm  
Edition: Unique  
Materials: Velvet, Wood

This mirror, designed alongside the bed, draws on feng shui principles to create a womb-like, calming space. Inspired by skin tones and organic, mushroom-like shapes, it embodies tranquility and sparks vivid dreams. Serving as a portal to the astral plane, it guides the transition between wakefulness and sleep. When gazing into the mirror, I connect with another dimension, channeling creative inspiration.



# FURNITURE

## Cama Portal



Cama Portal  
H 110 cm L 253 x W 210 cm  
Edition: Made to order  
Materials: Velvet, Wood

A bed designed as a portal for deep rest, wrapped in soft velvet, like sinking into a cloud. The beige tones bring warmth and grounding, creating a sense of calm in alignment with feng shui principles. More than a place to sleep, it becomes a threshold between worlds—where the body relaxes, the mind drifts, and dreams take shape.





# FURNITURE

## Portal Desk



Portal Desk  
167 x 60 x 75 cm  
Edition: One of a Kind  
Materials: Marble, Metal, Stone, Car Paint

This desk serves as a gateway to creativity, designed to inspire focus and imagination. Its marble surface, organic stone elements, and vibrant car paint finish merge functionality with a sense of timelessness, while its unique design evokes the idea of a portal—bridging the physical and creative realms.



Black marble slab with white veining, supported by six vertical pillars of varying heights and materials.

Black marble pillar with a gold sphere on top.

Stack of spheres: white, black, gold, on a white marble pillar.

Black marble pillar with a wooden cylinder and a silver sphere on top.

Black marble pillar with a wooden cylinder, a silver sphere, and a green sphere on top.

Stack of spheres: white, black, gold, on a white marble pillar.

Black marble pillar with a gold sphere on top.

# FURNITURE

## Marble Wavy Desk



Marble Wavy Desk  
W 175 cm H 65 cm L 85 cm  
Onyx, Black Marble, Green Marble, Stainless Steel

This desk combines organic curves and luxurious materials. Its wavy design brings a sense of movement and elegance, transforming the workspace into a creative and inspiring environment.



PACKAGING DESIGN IN JAPAN I

THE SECRET POWER OF PYRAMIDS  
THE SECRET POWER OF PYRAMIDS  
THE SECRET POWER OF PYRAMIDS

HOW TO COMMUNICATE LA MENTE  
THE STRONGER THE MORE  
THE STRONGER THE MORE  
THE STRONGER THE MORE

THE SECRET POWER OF PYRAMIDS  
ARTE MADI KOSICE  
NEW ITALIAN DESIGN BELLATI

1968  
ARTE  
DESIGN COMPLETE

THE AGE OF COLLAGE  
HIPGNOSIS | PORTRAITS  
THE ART OF THE OCCULT  
Display Art  
THE ART OF THE OCCULT  
THE ART OF THE OCCULT

# FURNITURE

## Onyx Energy Desk



Onyx Energy Desk  
W 200 cm x H 65 cm x L 85 cm  
Onyx, Black Marble

This front desk, designed for Faena Tulum, is crafted entirely from onyx and black marble. Its organic shape merges elegance and functionality, creating a striking centerpiece for any space. Onyx, known as the “stone of energy,” is believed to enhance focus and inner strength, making this piece not only visually impactful but also spiritually uplifting.



FURNITURE  
Pyramid in the Clouds



Pyramid in the Clouds  
W 70 x H 87 cm x L 52 cm  
Marble, Onyx, Marble Dorado Tepeji

This piece embodies the internal conflict within me, oscillating between breaking free from the constraints of total geometry and embracing the allure of more fluid shapes.





## (C) Biography



Pilar Zeta is an Argentinian-born artist currently based in Mexico City. Renowned for her exceptional artistic talent, Zeta has achieved international recognition, including a 2021 Grammy nomination for her outstanding role as the Art Director for Coldplay's *Everyday Life* album. Her artistic expression encompasses immersive installations that transport viewers to new realms of perception and contemplation. Her works seamlessly blend elements of philosophy, mathematics, symbolism, mysticism, and surrealism, while embracing the aesthetics of postmodern architecture and the use of color and shapes as a primordial language. Through metaphorical doors, portals, and transformative symbols, Zeta creates surreal spaces that connect individuals with their higher selves and open gateways to infinite possibilities, engaging with the depths of the subconscious.

In 2021, Zeta's artistic journey took a transformative leap as she created a monumental installation at Miami Art Week held at Faena Miami. Titled *Hall of Visions*, this site-specific artwork mesmerized audiences with its grandeur and immersive experience, becoming the most photographed artwork throughout the week. Deepak Chopra, the renowned spiritual leader and author, held a meditation session within the immersive environment, adding an additional layer of transcendence to the artwork. His presence and admiration further solidified the significance of Zeta's creation, with Deepak acknowledging that her artwork was "an incredible manifestation of profound ideas."

In 2022, Zeta continued to captivate audiences with two remarkable exhibitions that garnered significant attention and press coverage. Her solo exhibition *The Space of Variations* at Praz-Delavallaz in Los Angeles provided a glimpse into the artist's exploration of different dimensions, merging the physical with the digital world within the concept of quantum physics. This successful exhibition set the stage for Zeta's subsequent installation during Miami Art Week 2022, titled *Future Transmutation*. This massive all-purple installation engaged with mathematics, astronomy, and occult philosophies as creative devices, inviting viewers to explore the concept of transformation and transmutation. In February 2023, Zeta showcased another large-scale installation and exhibition titled *Doors of Perception* at Galerie Philia during MACO Art Week in Mexico City. The immersive artwork, crafted entirely from marble, explored the concept of doors as gateways to new perceptions. It featured Zeta's first collectible design collection, inviting viewers to contemplate the transformative power of symbolism.

The interplay of minimalist, surrealist landscapes, vibrant color palettes, and deconstructed shapes defines Zeta's unique style, coined as 'mystical futurism,' honoring ancient traditions of practical magic while showcasing her innovative skills and distinctive aesthetic.

In addition to her installations and artworks, Zeta has collaborated with influential musical artists, including Coldplay, Lil Nas X, Katy Perry, and Camila Cabello, among others. Her creative endeavors range from crafting iconic album artwork to directing music videos and live performances. Notably, Zeta won a Bronze Clio Award for Best Direction for her work on Camila Cabello's music video *Don't Go Yet*, further solidifying her multifaceted creative talent.

Pilar Zeta's diverse artistic endeavors, deeply influenced by the mysteries of ancient Egypt and cosmology, continue to push the boundaries of creative expression, inspiring audiences globally with her visionary approach and captivating exploration of the unknown.

**(D) Press**

October 30, 2023

Egypt's pyramids host  
stunning works of art  
**CNN Style**

---

September 15, 2023

20 Questions for  
Pilar Zeta  
**AD**

---

November 14, 2023

Pilar Zeta's Homage to  
Ancient Egypt  
**ID MAGAZINE**

---

October, 2023

Pilar Zeta at Forever is  
Now III  
**FLAUNT**

---

February 7, 2024

Temple of Self: An  
Interview of Pilar Zeta  
by Gaia Matisse  
**AUTRE**

---

December 13, 2022

Pilar Zeta channels her  
ideal self with 'Future  
Transmutation' in Miami  
**PAPER**

---

March 21, 2024

Pilar Zeta and Her  
Quantum Ascension  
in Art  
**EL PAIS**

---

April 10, 2024

Five key projects by  
artist and Dezeen  
Awards judge Pilar Zeta  
**DEZEEN**

---

January 27, 2025

Pilar Zeta exhibits in  
Egypt, and a partner  
of Elon Musk bought  
one of her works  
**PERFIL**

---

May 24, 2022

The Space of Variations,'  
the first solo exhibition  
by artist Pilar Zeta,  
explores our digital sixth  
sense  
**VOGUE**

---

December 7, 2022

This are the two art  
installation Pilar Zeta  
& Miranda Makaroff  
has presented in Miami  
**FORBES**

---

October 2, 2022

Artist Pilar Zeta faces  
her most productive  
autumn with exhibitions  
of ephemeral works in  
Amsterdam, Cairo and  
Miami  
**VOGUE**

---

## (E) Awards & Recognitions

2024 DEZEEN  
**Jury Award Selection**

2023 CLIO  
**Award Bronze Winner Best Video  
Direction for Camila Cabello  
“Don’t Go Yet”**

2021 GRAMMY  
**Nominee Best Art Direction for  
Coldplay “Everyday Life”**

## (F) Exhibitions

## **Beyond The Ego**

Moco Museum London

(Group Show w/ Marina Abramović, Andrés Reisinger, Filip Custic, and Daniel Arsham)

2024

## **The Garden of Duality**

Dubai Art Week

2024

## **Temple of Self**

Zona Maco, Mexico City

2024

## **Mirror Gate**

Forever is Now III, Pyramids of Giza

2023

## **Doors of Perception**

Gallerie Philia, Mexico City

2023 (Solo Show)

## **Future Transmutation**

Miami Art Week

2022 (Solo Show)

## **The Space of Variations**

Praz-Delavallaz, Los Angeles

2022 (Solo Show)

## **Hall of Visions**

Miami Art Week, Faena Art

2021 (Solo Show)

## **Crossroads**

Aorist, NFT Exhibition

(Group Show w/ Refik Anadol, Andrés Reisinger, Carlos Betancourt)

2021

## **A Head Full of Dreams Exhibition**

Pilar Zeta & Coldplay, A Gallery, London

2017 (Solo Show)



IG  
CONTACT

@PILARZETA  
STUDIO@PILARZETA.COM  
+1 646 659 0844  
PILARZETA.COM

